



20 Mountain Vista Drive

Big Timber, Montana

\$499,000

The Crazy Mountain views from this custom-built home are awesome!

Newly constructed in 2020, the living space of this home includes a master suite, two other bedrooms, and two full bath's. The home has an open floor plan with beautiful wood floors throughout with carpet in the bedrooms.

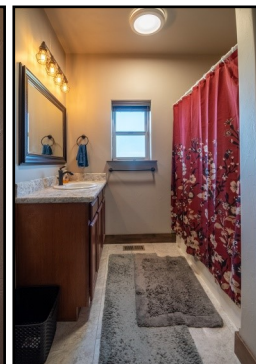
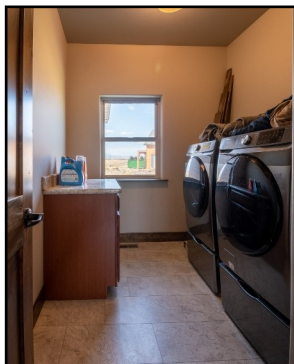
This subdivision boasts one of the greatest attributes we could offer for the area. Private river access for the lot owners!! Launch your raft or go down and throw a stick for the dogs. Give us a call to take a look!



Offered Exclusively By:
Sonny Todd Real Estate
301 West First Avenue, PO Box 828
Big Timber, Montana 59011
Office: (406) 932-1031



Mary Ann Duffey
(406) 930-6607



DESCRIPTION:

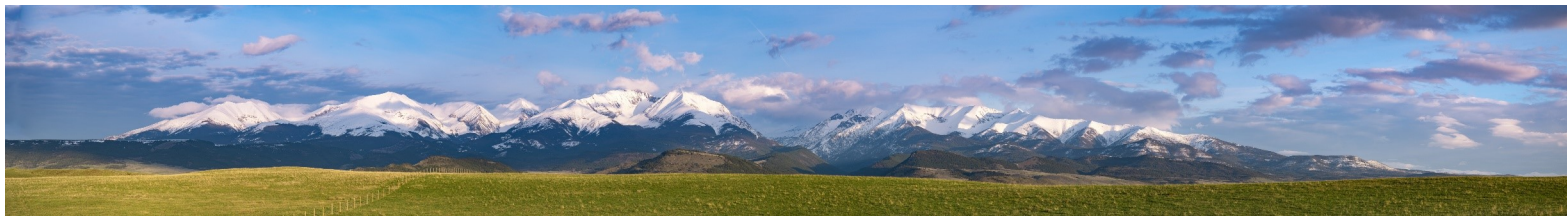
Home: 3BR/2BA

Elevation:
4,300-4,500 ft.

Taxes: \$1,638

Sq. Ft.: 1,816





BIG TIMBER: Located at the confluence of the Yellowstone and Boulder River, Big Timber is the Sweet Grass County seat and services as the support system to the areas cattle ranching community and recreation industry. Big Timber features a school system which offers K-12, a hospital, clinic, nursing home, Assisted Living, dentist, beauty shops, a quilt shop, golf course, churches, grocery and clothing stores, museums, art galleries, a brewery, establishments offering fine food from the nationally acclaimed dining at "The Grand Hotel", to casual meals at the Thirsty Turtle, motels, bed and breakfasts, movie theater and a paved airport capable of facilitating most any private aircraft.



NOTICE:

The data contained herein was obtained from the owner and other sources deemed reliable, but is not guaranteed by agents. Prospective purchasers may be asked to provide a financial reference prior to a showing and are advised to examine the facts to their own satisfaction. This offering is subject to change of price and terms, lease, prior sale or withdrawal from the market, without notice.