

601 McLeod Street

Big Timber, Montana



\$925,000

Welcome to your perfect blend of classic charm and contemporary luxury! Nestled in a serene neighborhood, this meticulously refurbished home offers a harmonious fusion of original character and modern amenities. With abundant natural light flooding every corner, you'll relish the warmth and inviting ambiance from the moment you step inside.

Features: 4 bedrooms, 2 1/2 baths, 3,000 sq. ft. double attached garage.

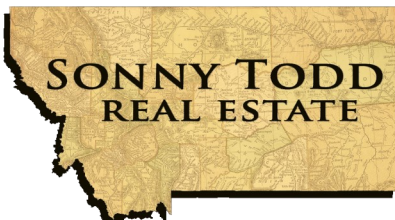
The home has been completely refurbished in the last 4 years from the basement up to the roof and from the inside out.

Original Charm: Preserving its timeless appeal, this home exudes original charm at every turn. From the solid fir doors to the graceful architectural details, each element reflects a bygone era's elegance.

Modern Amenities: Indulge in the convenience of modern living with all-new maple hardwood flooring and porcelain tile seamlessly blending style and durability. The thoughtfully designed kitchen boasts top-of-the-line KitchenAid appliances, sleek new cabinets, Silestone counters, farmhouse sink with copper faucets and contemporary lighting, creating a culinary haven for any chef.

Abundant Natural Light: Bask in the glow of natural light streaming through expansive windows, illuminating every room with a cheerful ambiance and highlighting the home's inviting atmosphere.

All of this and located in the charismatic town of Big Timber, Montana. With the majestic Crazy Mountains as the backdrop and at the confluence of the Boulder and Yellowstone Rivers it is a mecca for all recreational activities. Just an hour from an international airport.

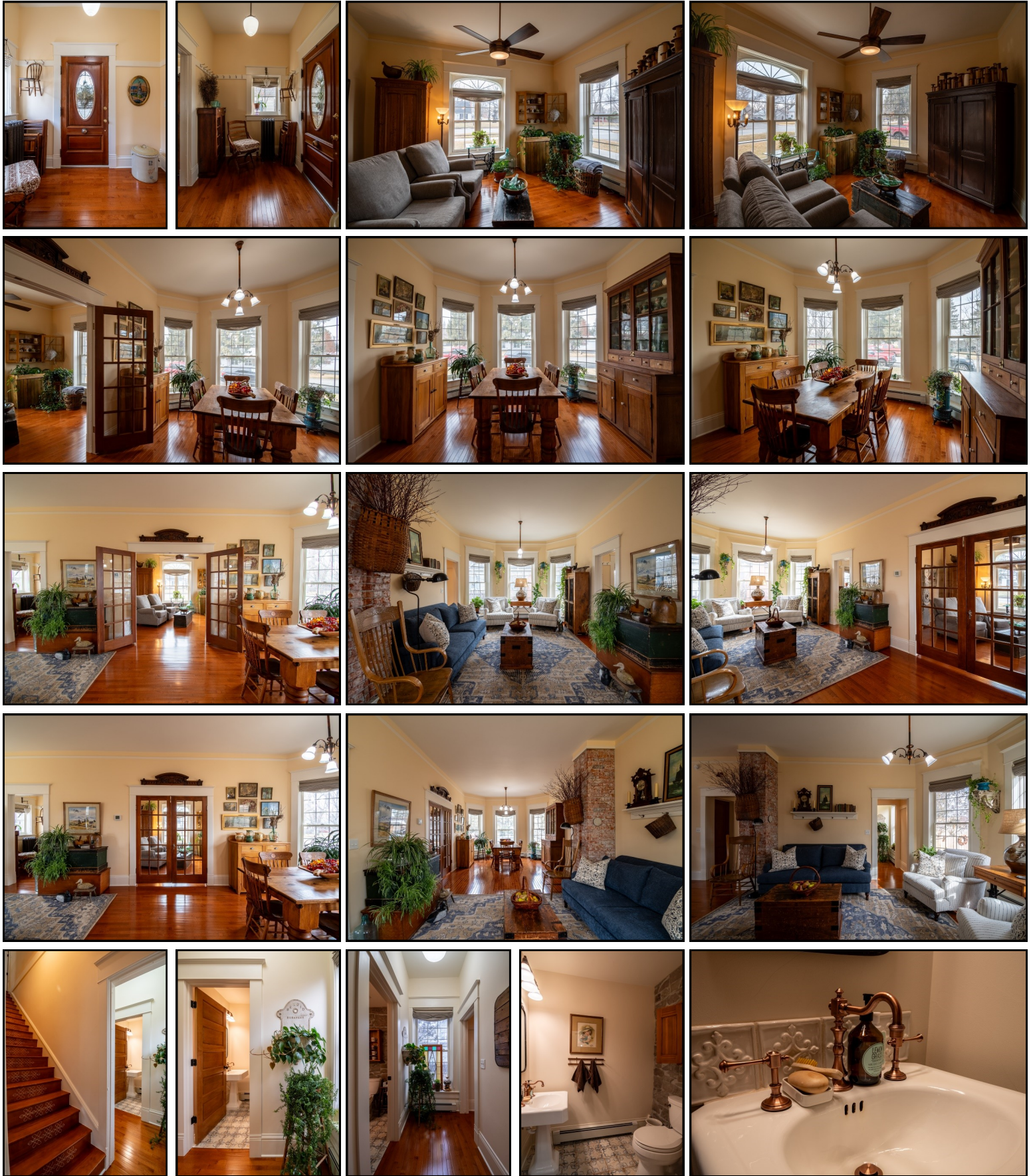


Offered Exclusively By:
Sonny Todd Real Estate
301 West First Avenue, PO Box 828
Big Timber, Montana 59011
Office: (406) 932-1031



Mary Ann Duffey
(406) 930-6607

Main floor living spaces, and guest bathroom

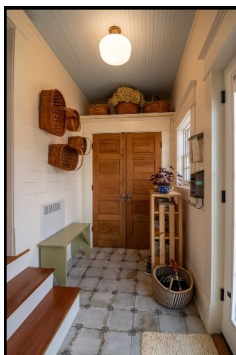


Notice: The data contained herein was obtained from the owner and other sources deemed reliable, but is not guaranteed by agents. Prospective purchasers are advised to examine the facts to their own satisfaction. This offering is subject to change of price and terms, lease, prior sale or withdrawal from the market, without notice.

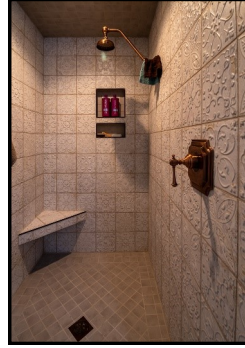
Kitchen and Dining Area



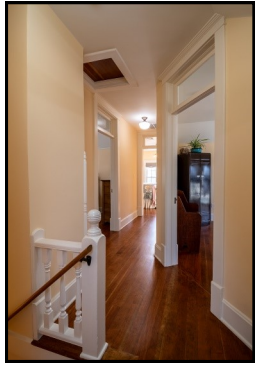
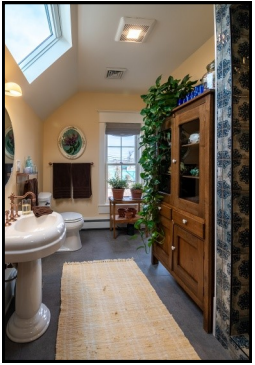
Side Entry and Laundry Room



Master Bedroom



Second Floor Bathroom



Second Floor Bedrooms





Montana

Grandpa Sonny Todd's Real Estate Editorial

We believe Montana is the "Best Last Place." Montana plays in our minds that mythological West that all Americans love. It is the home of real legends, with real places and real people. It was a horn of plenty for the Native Americans, with prairies full of fat buffalo and clear mountain streams overflowing with trout and beaver. Montana evolved from the wilderness through the efforts of mountain men, gold miners, sturdy pioneers, as well as through a bloody struggle between competing cultures. Law and order came to the Montana Territory by the gun and hanging tree. It was Vigilante verses Outlaw, and often it was a fine line that separated the two. Montana is the West, home of the Cowboy and Cowponies, and endless horizons.

Montana is the land of snow-capped mountains, pristine wilderness areas, sparkling rivers and streams, and golden wheat fields all under 'The Big Sky.'

Welcome to "*The Best Last Place*," Montana.

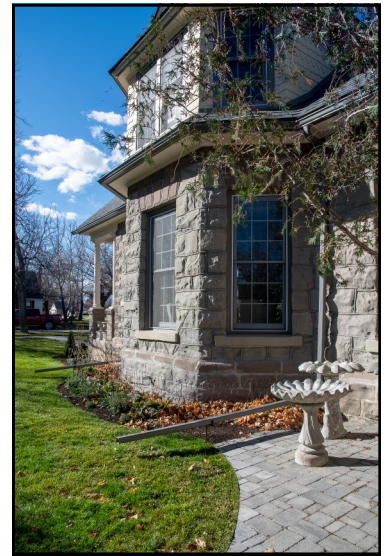




BIG TIMBER: Located at the confluence of the Yellowstone and Boulder River, Big Timber is the Sweet Grass County seat and services as the support system to the areas cattle ranching community and recreation industry. Big Timber features a school system which offers K-12, a hospital, clinic, nursing home, Assisted Living, dentist, beauty shops, a quilt shop, golf course, churches, grocery and clothing stores, museums, art galleries, establishments offering fine food from the nationally acclaimed dining at "The Grand Hotel", to casual meals at the Timber, motels, bed and breakfasts, movie theater, brewery, and a paved airport capable of facilitating most any private aircraft. Big Timber has much to offer as a small comfortable Montana town.

BILLINGS: Located approximately 82 miles to the east, Billings is the center of Montana's livestock industry. The International Airport in Billings is presently serviced by 5 majors airlines. Billings has two of the finest medical facilities in the northwest. Shopping, fine dining, theater and the arts make Billings the true hub of Montana.

BOZEMAN: Located 63 miles west via I-90, Bozeman is the home to Montana State University. Bozeman is known as a year-round recreation center. Fishing is a short distance away on the Gallatin, Madison, and Jefferson Rivers. Gallatin County has numerous hiking and biking trails. Bozeman's winter time sports feature skiing Bridger Bowl's legendary "Cold Smoke Powder" or a 45 mile drive to Big Sky, Montana's largest ski area and summer resort. For cross country skiing enthusiasts, this area of Montana features miles of groomed and unpacked cross-country trails.



Back Yard and Garage

The private backyard has cedar fencing, six raised beds with each having their own drip system, and surrounded by 3/8" gravel chips for easy cleaning and non-toxic to pets. Ample storage in the 24'x24' two car garage with additional pull down storage.



